



# Flight Plan & Site Survey

Created using **RPAS Wilco®**

Operation Name:

Pilot Name:

Pilot Certificate:

Flight Start:

Flight End:

Flight Area (Latitude):

Flight Area (Longitude):

Altitude - Radius:

Airspace:

FIR - Contact:

C-2304106622

March 23, 2023 5:44 PM

March 23, 2023 7:44 PM

52° 20' 8.10" N ( 52.336 )

112° 40' 39.70" W ( -112.678 )

Alt: 700 ft - Rad: 926.0 m ( 0.5 nm)

UNCONTROLLED

CZEG - 780-890-8397

Please ensure you received all required authorizations prior to flight.

## Disclaimer

This Site Survey was created using RPAS Wilco by AIM Robotics. The flight plan contained is intended only for RPAS flights on the date/time and location specified. The user accepts all responsibility for the accuracy and completeness of the information contained.

For the complete Terms & Conditions, see

<https://rpaswilco.com/#/tnc>

## Included

Site Survey

Obstacles (if available)

Nearby Aerodromes

Canadian Aviation Regulations

GFA

Aerodrome Supplements

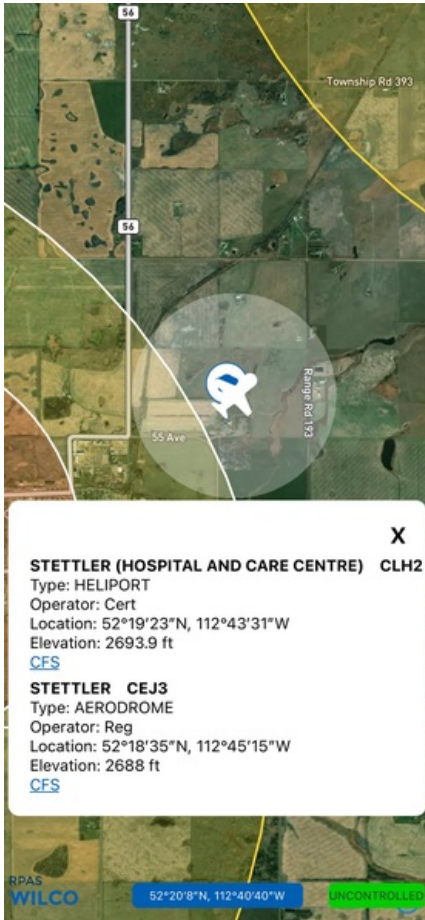
METAR & TAF (if available)

NOTAMS



CFS



## Flight Map



## MAP Details

	Latitude	Longitude
 <b>MODEL</b>	52° 20' 8.10" N ( 52.336 )	112° 40' 39.70" W ( -112.678 )
 <b>Pilot</b>	52° 20' 11.70" N ( 52.3366 )	112° 40' 43.30" W ( -112.6787 )



## Airspace Classification



## Overlying Airspaces

Class	Name	Floor	Ceiling
-------	------	-------	---------

## Nearest Aerodromes & Distance from Operation

STETTLER (CEJ3 AERODROME Reg)	Lat: 52.31	Long: 112.754	5.915 KM	3.19 NM
STETTLER (HOSPITAL AND CARE CENTRE) (CLH2 HELIPORT Cert)	Lat: 52.323	Long: 112.725	3.506 KM	1.89 NM
LYSTER FIELD (CLY3 AERODROME Reg)	Lat: 52.391	Long: 112.604	7.938 KM	4.29 NM
BASHAW (CFK2 AERODROME Reg)	Lat: 52.557	Long: 112.965	31.39 KM	16.95 NM

# Canadian Aviation Regulations

## Division III — General Operating and Flight Rules

For full listing please visit <https://laws-lois.justice.gc.ca/eng/regulations/SOR-96-433/FullText.html#s-901.27>

### Visual Line-of-sight

- **901.11 (1)** Subject to subsection (2) no pilot shall operate a remotely piloted aircraft system unless the pilot or a visual observer has the aircraft in visual line-of-sight at all times during flight.
- **(2)** A pilot may operate a remotely piloted aircraft system without the pilot or a visual observer having the aircraft in visual line-of-sight if the operation is conducted in accordance with a special flight operations certificate — RPAS issued under section 903.03.

### Procedures

- **901.23 (1)** No pilot shall operate a remotely piloted aircraft system unless the following procedures are established:
  - **(a)** normal operating procedures, including pre-flight, take-off, launch, approach, landing and recovery procedures; and
  - **(b)** emergency procedures, including with respect to
    - **(i)** a control station failure,
    - **(ii)** an equipment failure,
    - **(iii)** a failure of the remotely piloted aircraft,
    - **(iv)** a loss of the command and control link,
    - **(v)** a fly-away, and
    - **(vi)** flight termination.
- **(2)** If the manufacturer of the remotely piloted aircraft system provides instructions with respect to the topics referred to in paragraphs (1)(a) and (b), the procedures established under subsection (1) shall reflect those instructions.
- **(3)** No pilot shall conduct the take-off or launch of a remotely piloted aircraft unless the procedures referred to in subsection (1) are reviewed before the flight by, and are immediately available to, each crew member.
- **(4)** No pilot shall operate a remotely piloted aircraft system unless the operation is conducted in accordance with the procedures referred to in subsection (1).

### Site Survey

**901.27** No pilot shall operate a remotely piloted aircraft system unless, before commencing operations, they determine that the site for take-off, launch, landing or recovery is suitable for the proposed operation by conducting a site survey that takes into account the following factors:

- **(a)** the boundaries of the area of operation;
- **(b)** the type of airspace and the applicable regulatory requirements;
- **(c)** the altitudes and routes to be used on the approach to and departure from the area of operation;
- **(d)** the proximity of manned aircraft operations;
- **(e)** the proximity of aerodromes, airports and heliports;
- **(f)** the location and height of obstacles, including wires, masts, buildings, cell phone towers and wind turbines;
- **(g)** the predominant weather and environmental conditions for the area of operation; and
- **(h)** the horizontal distances from persons not involved in the operation.

### Operations at or in the Vicinity of an Aerodrome, Airport or Heliport

- **901.47 (1)** No pilot shall operate a remotely piloted aircraft at or near an aerodrome that is listed in the *Canada Flight Supplement* or the *Water Aerodrome Supplement* in a manner that could interfere with an aircraft operating in the established traffic pattern.
- **(2)** Subject to section 901.73 no pilot shall operate a remotely piloted aircraft at a distance of less than
  - **(a)** three nautical miles from the centre of an airport; and
  - **(b)** one nautical mile from the centre of a heliport.
- **(3)** No pilot shall operate a remotely piloted aircraft at a distance of less than three nautical miles from the centre of an aerodrome operated under the authority of the Minister of National Defence unless the operation is conducted in accordance with a special flight operations certificate — RPAS issued under section 903.03.

### Records

- **901.48 (1)** Every owner of a remotely piloted aircraft system shall keep the following records:
  - **(a)** a record containing the names of the pilots and other crew members who are involved in each flight and, in respect of the system, the time of each flight or series of flights and
  - **(b)** a record containing the particulars of any mandatory action and any other maintenance action, modification or repair performed on the system, including
    - **(i)** the names of the persons who performed them,
    - **(ii)** the dates they were undertaken,
    - **(iii)** in the case of a modification, the manufacturer, model and a description of the part or equipment installed to modify the system, and
    - **(iv)** if applicable any instructions provided to complete the work.
- **(2)** Every owner of a remotely piloted aircraft system shall ensure that the records referred to in subsection (1) are made available to the Minister on request and are retained for a period of
  - **(a)** in the case of the records referred to in paragraph (1)(a), 12 months after the day on which they are created; and
  - **(b)** in the case of the records referred to in paragraph (1)(b), 24 months after the day on which they are created.
- **(3)** Every owner of a remotely piloted aircraft system who transfers ownership of the system to another person shall, at the time of transfer, also deliver to that person all of the records referred to in paragraph (1)(b).

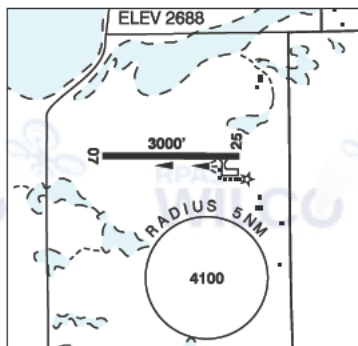
## ALBERTA

## AERODROME/FACILITY DIRECTORY

## STETTLE AB

CEJ3

<b>REF</b>	N52 18 36 W112 45 16 1.5SW 15°E (2012) UTC-7(6) Elev 2688' A5005 A5015 LO2 CAP
<b>OPR</b>	Town & County 403-742-8305 Reg
<b>PF</b>	B-1 D-2,3,4,5,6
<b>FLT PLN</b>	
<b>FIC</b>	Edmonton 866-WXBRIEF (Toll free within Canada) or 866-541-4102 (Toll free within Canada & USA)
<b>ACC</b>	Edmonton IFR 888-358-7526
<b>SERVICES</b>	
<b>FUEL</b>	100LL
<b>S</b>	5
<b>RWY DATA</b>	Rwy 07(076°)/25(256°) 3000x75 asphalt
<b>RCR</b>	Opr Ltd maint
<b>LIGHTING</b>	07-(TE ME), 25-(TE ME) ARCAL-123.0 type K
<b>COMM</b>	
<b>ATF</b>	UNICOM ltd hrs O/T t/c 123.0 5NM 5700 ASL
<b>PRO</b>	Rgt hand circuits Rwy 07 (CAR 602.96).



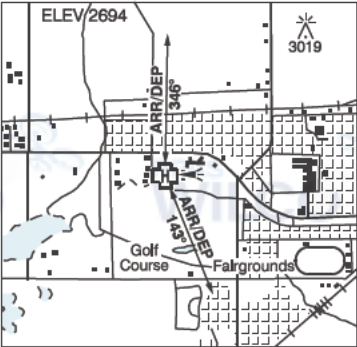
ALBERTA

AERODROME/FACILITY DIRECTORY

STETTLER (HOSPITAL & CARE CENTRE) AB (Heli)

CLH2

REF	N52 19 24 W112 43 31 Adj 14°E (2013) UTC-7(6) Elev 2694' A5005 A5015
OPR	Alberta Health Services 403-742-7400 Cert NVIS OPS AUTH PPR
FLT PLN	
FIC	Edmonton 866-WXBRIEF (Toll free within Canada) or 866-541-4102 (Toll free within Canada & USA)
ACC	Edmonton IFR 888-358-7526
HELI DATA	FATO 64' dia GRASS TLOF 35' octagonal Safety Area 90' dia Max heli overall length 44.8'
LIGHTING	RW(ME) yellow PN
COMM	
ATF	UNICOM ltd hrs O/T tfc 123.0 5NM centered on Stettler A/D 1.3NM SW 5700 ASL
PRO	Arr/dep 346° & 143° fr heli, slope 16% (H2) (CAR 602.96) NVIS rqrd for night use, all flt paths (CAR 602.96)
CAUTION	P-lines N heli. Trees to 66 AGL SE to SW of heli. Trees to 35 AGL NE to SE of heli.





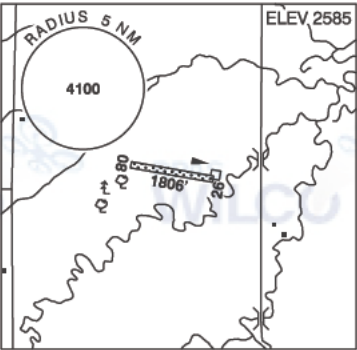
ALBERTA

AERODROME / FACILITY DIRECTORY

STETTTLER / LYSTER FIELD AB

CLY3

REF	N52 23 28 W112 36 15 1.7NE 13°E (2021) UTC-7(6) Elev 2585' A5015
OPR	Norman Lyster 403-742-6631 Reg PPR A/D clsd Dec-Mar
FLT PLN FIC	Edmonton 866-WXBRIEF (Toll free within Canada) or 866-541-4102 (Toll free within Canada & USA)
RWY DATA RCR	Rwy 08/26 1806x75 GRASS Opr No win maint
COMM ATF	tfc 123.0 5NM 5600 ASL
CAUTION	Lgtd twr 2908 ASL (340 AGL) aprx 3.4NM NNE A/D. Multiple lgtd twr up to 3019 ASL aprx 5 NM S and SSW A/D.



ALBERTA

AERODROME/FACILITY DIRECTORY

BASHAW AB

CFK2

REF	N52 33 27 W112 57 53 1.5S 15°E (2012) UTC-7(6) Elev 2610' A5015
OPR	Town 780-372-3911 Reg
PF	A-1 C-2,4,5 D-3,6
FLT PLN	
FIC	Edmonton 866-WXBRIEF (Toll free within Canada) or 866-541-4102 (Toll free within Canada & USA)
ACC	Edmonton IFR 888-358-7526
RWY DATA	Rwy 10(105°)/28(285°) 2950x75 GRASS
RCR	Town Foreman 780-781-4786 Ltd win maint
COMM	
ATF	tfc 123.2 5NM 5700 ASL
PRO	Overfly rwy prior to ldg.
CAUTION	Deer in vic of aprt.

